

## 2021 AGM Saturday 15th January 2022

The Annual General Meeting was held by Zoom, due to uncertainty around Covid 19. Cirencester agreed to defer the proposed in-person meeting at Chedworth for a year and GWG acted as hosts once more.

It was a time for consolidation and Members from across the Gloucestershire Area, elected Officers largely the same as last year. Area Membership and Area Walks Co-ordinator were two unfilled posts and grateful thanks were offered to Gwen Chaney and Susanne Zamze for their years in the respective roles.

Changes, over the last two years, in the way Ramblers operates led to the motion to General Council to return Member activities alongside Volunteer activities and which was passed unanimously.



Alan Austin, from Ramblers' Board of Trustees gave a slide presentation including about the new Brand, and Don't Lose your Way. In response to a question he confirmed the importance of the role of Ramblers in maintaining paths as well as signage. He also sought input on Ramblers changes to Group Insurance, and responses indicated that risk assessments had a less than positive effect on retaining walk leaders.

The Chair thanked everyone for attending and expressed appreciation of the efforts of all involved in meeting Ramblers' Charitable aims for the benefit of walkers across the County.

### Diary Dates

Winchcombe Walking  
Festival 20-22nd May

Walking Together  
Sat 3rd September

Gloucestershire Ramblers  
Area Council Meetings

Wed 30th March 7:30pm  
(General Council Matters)

Wed 25th May 7:30pm  
Wed 27th July 7:30pm

Find us Meetup Facebook



## Footpath CHL9 Leckhampton, Cheltenham

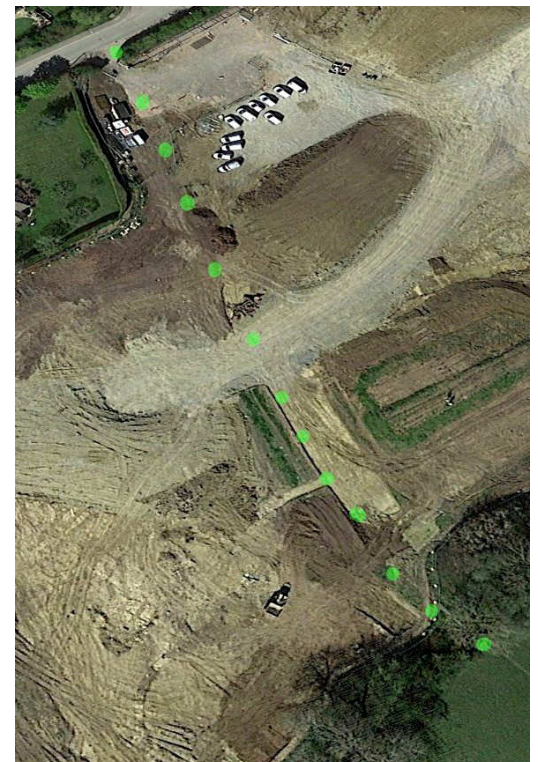
The Planning Inspector agreed that, as with many schools, a public footpath could remain for the benefit of schoolchildren, walkers and the local community.

It can be seen from the Google Earth image that the new site is well under construction. The path (shown with green dots) was due to be extinguished under section 257 of the Town & Country Planning Act 1980 - where it is necessary for the development to take place.

Gloucestershire Ramblers and the Parish Council spoke at the inquiry after Cleeve Ramblers and over 100 people objected, as the path is a popular link. An aim of the scheme is for parking to be kept to a minimum to encourage walking and cycling.

The plans showed the line of the path with sports pitches either side, allowing access from Farm Lane. It was found that a new hedge need not be planted on the line of the path and a small substation had already been re-sited. With a suitable sub-surface, emergency services could also use the path if required.

It was therefore deemed not necessary to extinguish the path for the school to be completed - a welcome result all round.





## A417 Missing Link at the Air Balloon - Public Inquiry

The Planning Inspectorate is now in the process of examining the Development Consent Order application made by National Highways. At the end of January there were a number of open hearings which could be watched online with representations by various people including Parish Councils and Landowners.

### Barrow Wake Viewpoint Car Park

Although not part of the A417 scheme, it is being considered for mitigation in two ways:-

Firstly to be grassed over for compensation for loss of landscape within the scheme.  
- it's existed as a road for many thousands of years possibly predates Emma's Grove.

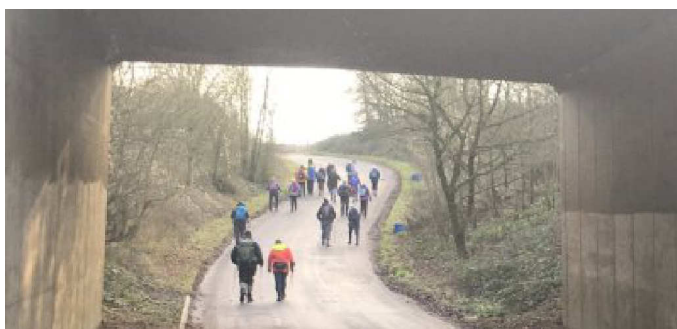
Alternatively allow for the increased parking, to replace parking lost from the access road and from the Air Balloon (if it's demolished).



Above a busy day -the car park can approach capacity. It's surrounded by a Site of Special Scientific Interest.

The quiet road left, is a walking and cycling route up to Shab Hill and part of a popular Crickley Hill circular walk. It's planned to be the main link road for traffic from the new A417 into Birdlip village and beyond.

What isn't wanted is for the verges of the SSSI or Birdlip Village to become regular places for parking due to a lack of foresight in the plans.



### Don't Lose your Way!

The process continues. If you're interested in helping find lost ways or researching old maps to find evidence that they're lost, please contact us at [DLYW@gloucestershireramblers.org.uk](mailto:DLYW@gloucestershireramblers.org.uk) or via GRupdate.

### Stony Tracks, Drainage and Pedestrian Gates

Many years ago, people working the fields would have thrown spare stone onto old tracks. It becomes a relatively free draining path. Sometimes a ditch dug either side would create a sort of high way through lower lying damp lands.



Kissing gates & stiles often have a ditch nearby, but can standing water find its way off the path?



A rambler-gate has swinging centre arms (with chains to either side) to allow walkers to step through. Have you seen any of these around the county? (courtesy wikipedia)



## **Group and Area Activities**

There are seven Ramblers Groups within Gloucestershire Ramblers Area : Cirencester, Forest of Dean, South Cotswold, Gloucester, Cleve, North Cotswold, Gloucestershire Walking Group. GWG has a 20-30s sub-group. A number of Affiliated Organisations are also represented at our Area Council meetings. Some 60 Ramblers Areas join together to form the Ramblers Association.

### **Cirencester Ramblers**

The 47th AGM was held at Ampney Crucis Village Hall on Sunday 1st November 2021 at 1.30 pm. Michele Holden, Area Chair, joined us and there was good attendance. After a short walk and a meal, business was brisk. The post of Secretary, vacated by Pat Beckley after many years, was filled by Andrew Coles. Kathy Harris kindly took on a Programme Co-ordinator's section.

Chair Alison Goodall expressed condolences of the group on the death of Paul Horrell who had been the Group's Independent Assessor for many years. Several of the group had attended his funeral. Linda Chan Jones offered to take on the role.

Richard Holmes stated that path maintenance volunteers had undertaken a total 140 hours work over the past year.



On Wednesday 6th October to celebrate member Coralie Dustin's 90th Birthday, 22 family and friends (including her daughter Sue, granddaughter Laura, and great granddaughter Florence) did a short walk and retired to The Old Boathouse for lunch. At the lunch Coralie was presented with her Birthday Card signed by over 40 of her Rambler friends, flowers and a gift.

Looking ahead we have our annual weekend away on Friday 18<sup>th</sup> March returning to the Pines hotel in Swanage and our usual trip to Torquay in September.

The group continues to go from strength to strength with many new members.  
Pat Beckley, [www.cirencesterramblers.org.uk](http://www.cirencesterramblers.org.uk)

### **Gloucester Ramblers**

Gloucester Group's weekend and midweek walks have restarted with a full programme and an increasing level of support from members.

The Group's AGM was held on 17th November 2021 and attended by 30 members, who enjoyed meeting face to face again. Two new members were elected to our committee, replacing retiring members.



Our pre-Christmas "Hats and Jumpers" walk was very popular, as shown in this photo taken outside Badgeworth Church.

In January we held our Annual Luncheon at the Waypoint, Painswick Golf Club. This was enjoyed by 42 members and our speaker was Alan Sumnall from the Gloucestershire Wildlife Trust. His informative and entertaining presentation proved highly relevant to Ramblers and we hope he, or one of his colleagues, will lead a walk for us in future to reinforce what the Trust is doing.

Our first 4-month walking programme since 2019 will be issued shortly. The 2022 social programme includes a walking holiday in North Somerset and a coach trip to Waterperry Gardens.

John Bent-Marshall (Secretary) [www.gloucester-ramblers.org.uk](http://www.gloucester-ramblers.org.uk)



## Group and Area Activities continued

### South Cotswold Ramblers

I'm happy to report that at long last things definitely seem to be returning to normal.

The numbers walking are going up, usually in the twenties for most walks and as well as recruiting four new walk leaders, a few who had been reluctant to return are now leading walks.

Committee members have participated in several Ramblers on-line presentations about the new website and Walk Finder. The web site doesn't seem to be a problem for us and we can still keep our own website but the new Walk Finder looks as if it could have some issues but let's hope feedback is well received.

We held our AGM in Nov. 2021 on zoom which we have decided to continue with. Fortunately most members were happy to remain in post and our new walks co-ordinator was also voted in.

Ann Adams, [www.southcotswoldramblers.org.uk](http://www.southcotswoldramblers.org.uk)



### North Cotswold Ramblers at Cromwell's seat



[www.ramblers.org.uk/north-cotswold](http://www.ramblers.org.uk/north-cotswold)

### Cleeve Ramblers at the Langley Drover



[www.ramblers.org.uk/cleeve](http://www.ramblers.org.uk/cleeve)

## From the Archives

Cotswold Rambling Club was founded in 1925.

Cheltenham Rambling Club was founded in 1942

Stroud Rambling Club developed from both and was founded in 1953

Gloucestershire Mountaineering Club 1955

Above are Affiliated to Gloucestershire Ramblers Area.

Kinder Scout mass trespass was in 1935 which led to the formation of the Ramblers Association.

Swindon and Gloucester Ramblers Area was in operation when the Local Government re-organisation of 1974 was seen as an opportunity to revise Ramblers Areas including Gloucestershire.

GR01 Cirencester Group began in 1974

GR02 Forest of Dean 1978

GR03 Stroud & District Foot Path Group 1979

and became South Glos in 1986 then South Cots in 1998

GR04 Gloucester Group 1983

GR05 Cleeve 1985

GR06 Mid Glos 1986, was dissolved after 30 years in 2016

GR07 North Cotswold 1988

GR50 Younger Ramblers subsequently GWG 2000

Ramblers stalwart Tony Drake organised a series of 7 footpath work lectures for each Group in turn as part of their formation process. (Very thorough but a lot to take in after a hard day's work!)

Mavis Rear