



Sat 22 Sept 2018 - Forest of Dean Ramblers celebrate 40 years!

Seventy current and former members met at Yorkley Community Centre to join in the Group's 40th Anniversary – many took a nostalgic damp walk in the forest. It was 27th September 1978 that members of Gloucestershire Ramblers Area inaugurated its 2nd group, Forest of Dean Ramblers (Cirencester was 1974).



Ray Short, Susan and Robin Warren, the Founder Treasurer, Secretary, and Chairman, cut the beautiful 40th Anniversary Celebration cake.



On display were opening log books, newsletters and photographs from some of the many walks enjoyed by the Group over the 40 years. Current Chairman Peter Robbins & Secretary Jackie Huck welcomed Kate Ashbrook, Chair of Ramblers' Board of Trustees, here with Roger Cox, one of the Group's original walk leaders.

Sat 15 Sept 2018 – Walking Together

Around 60 walkers, 25% new to ramblers, joined Groups and Clubs from across the Area at Kings Stanley Village Hall for 3- 11 miles walks. GCC Footpaths team were present in the afternoon & Peter Carr, Ramblers Trustee rounded up the day.



Diary Dates - AGMs

Forest of Dean Ramblers Group
Friday 9th November Yorkley
GL15 4RS 7pm for 7:30 TBC

Cleeve Ramblers Group

Saturday 17th November at
Southam Village Hall GL52 3NS
Walk, Bring Share lunch, AGM

South Cotswold Ramblers Group

Saturday 17 November 2018 at
13.00 at Rodborough Tabernacle
Stroud GL5 3UJ

Cirencester Ramblers Group

Sunday 18th November 2018
9:45 Ampney Crucis Village Hall,
Main Street GL7 5RY. Walk, bring
and share lunch. AGM at 1.30pm

Gloucestershire Walking Group

Sunday 18th November
Sherborne Arms, Aldsworth, GL54
3RB Morning walk. AGM 2pm

Gloucester Ramblers Group

Thursday 29th November at Upton
St Leonards 7pm for 7:30 TBC.

North Cotswold Ramblers Group

Saturday 8th December Blockley
Morning Walk, Soups, AGM TBC

Gloucestershire Ramblers Area

Saturday 19th January 2019
Hosted by Forest of Dean Group
Catholic Hall, Coleford GL16 8HN
10:00 for 10:30 Reports & voting
Bring and share Lunch, short walk

GR Area Council meeting

Wed 30 Jan 2019 7:30pm
Gloucester Room, Premier Inn,
A38 Twigworth GL2 9PG

A message from Ramblers Loneliness and Social Isolation

Has walking helped you, or someone you know?

Walk magazine is hoping to put together a feature on how walking can help reduce loneliness and social isolation. A number of women have come forward but it can be difficult for men to discuss what may be a serious issue with life style changes. If anyone feels able to talk, please contact in confidence Richard.Sharp@ramblers.org.uk 0207 339 8521



Ramblers is asking us to contact local MPs to help protect footpaths if Brexit happens
<https://e-activist.com/page/29037>

Group Reports

North Cotswold Ramblers Group September 2018

Our Group continues to walk every second Saturday in the month with a varied programme and an average attendance of 12-15 people. The summer weather has not always been conducive to walking. On one particularly hot summer Saturday only 3 people turned up for a walk of over 10 miles but it was one of the most enjoyable with wide ranging conversation and great views.

We are always looking out for opportunities to improve the footpaths on our Diamond Way and recently supported an initiative by the Cotswold Wardens to replace a bridge and install a kissing gate in this environmentally sensitive area.



Cirencester Ramblers Group

Sunday 9th September walk and Boat trip from Gloucester Quays. 23 members and guests set off the Castle Meads car park for a 5.5 mile walk. Leaving the car park they were very soon in open countryside and eventually reached the River Severn. Gloucester Quays where they had time for refreshment, before a boat trip along the canal.

Footpath Maintenance Volunteers

On Saturday 11th August eight volunteers set off to drive to the village of Upton St Leonards to carry on the clearance of the Wysis Way. A friendly resident kindly let us park at his smallholding where we were joined by Mark from Gloucester group.

This was a very bizarre day! We started off by painting some of the posts on the path yellow as the way was very indistinct in this area. Carrying on we came across field full of motorcross races, where we stopped to watch as they flew over some mounds.

Shortly we could see the M5 in the distance and after crossing a bridge, settled for our lunch on a green with Robinswood Hill in sight. We were joined by some very friendly sheep who crossed the road to see what we had for lunch. Then they wandered back and forth across the road, holding up a wedding party.

We retraced our steps back to the start, where the landowner supplied us with a welcome cuppa and biscuits.

If you're interested in helping with maintenance across the county please contact Richard at footpaths@gloucestershireramblers.org.uk



(photo of painting a waymark post)

Lost Members in recent months

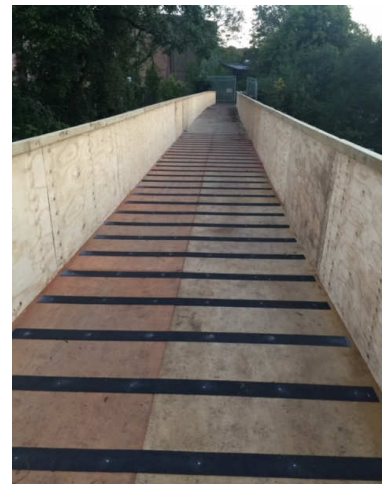
Jonathan Moore, keen walker, always willing to help, passed away just before the end of a GWG walk in July.

Annie Clement past Area Secretary, Cleeve Member, passed away suddenly in September

Des Smyth Mid-Glos Chair until its closure, and Cheltenham Spa Flexi Group, passed away on holiday in France

Black Bridge at Lydbrook (Stowfield Viaduct)

The bridge is an important connection between Gloucestershire and Herefordshire and was used by more than 20,000 walkers every year as part of the 136 mile Wye Valley Walk. Unfortunately a Heritage lottery bid by the Wye Valley AONB to reopen it was not successful at this time. Forest of Dean Ramblers, have been part of the steering group to reopen the bridge. The Group welcomes that Gloucestershire County Council and Herefordshire Council have managed to fund some temporary repairs to make passage safe under the bridge and include a scaffolding/boarded walkway.



A417 Missing Link, The Air Balloon, The Cotswold and Gloucestershire Ways

Many local people want a new A417 built and now. For years ramblers have wanted through traffic taken off local roads so they're crossable and become suitable for all road users.

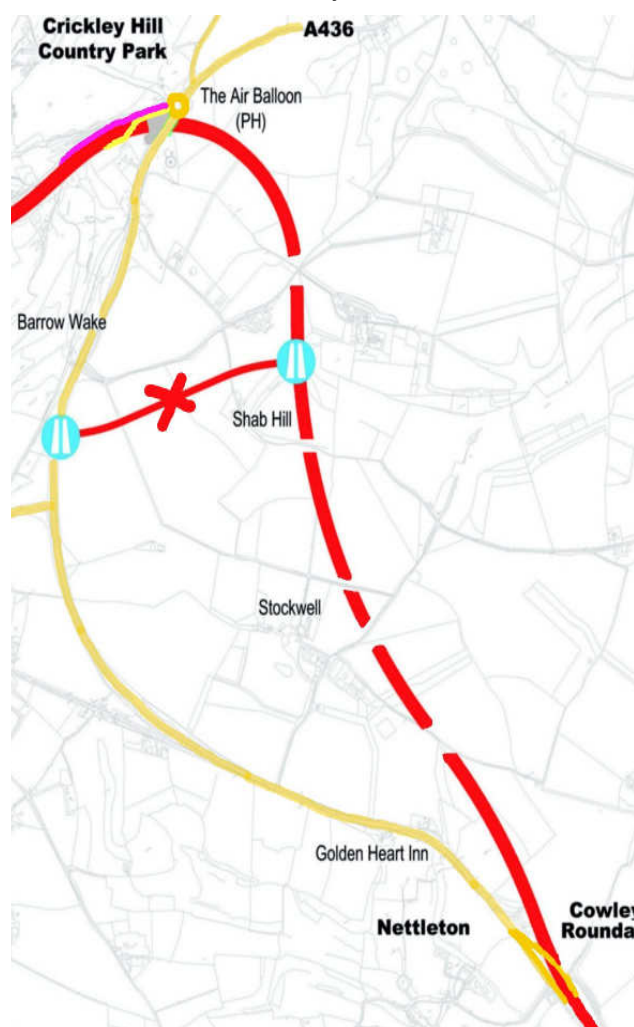
In September ramblers met again with Highways England to discuss simplifying its option 30. Deleting the link road not only saves some countryside, it frees up funds to take the new A417 under the Air Balloon (rather than demolishing it). It was one of the more credible suggestions they'd received.

The map right, shows option 30 in red with an X on the link road. Simplification needs the current A417 (mauve) as an upslip to the roundabout while a new (yellow) downslip takes traffic from the roundabout down to the new road. Below shows the new road (black) passing under the car park of the pub site – note there is a fair amount of green.



The Cotswold Way Association has chosen to support the idea of saving the pub site as a centre for walking alongside the Cotswold Way national trail and the Gloucestershire Way.

Highways England is still considering all responses received.



Satellite image ESRI

Map Highways England

GDPR- We've taken feedback that our members have a legitimate or contractual interest in receiving newsletters such as GRNews. It saves postage if your Group can use your email address. If Ramblers Central Office has your email, a member newsletter is available and Volunteers can receive a volunteering email. Where relevant, a member's preference settings can be updated at ramblers.org.uk/my-account (Update profile. Contact preferences). Or call Ramblers on 0207 339 8500

A page of Mid Week walks for the Gloucestershire Ramblers Area

Gloucestershire Ramblers Area organises a programme of day walks of approx 10-12 miles long, usually mid-week, in the county & neighbouring counties. Why not give us a try (please contact leader beforehand).

Once a member, all our walks are free! (Sorry Registered Assistance dogs only but see www.fodramblers.org.uk)

Wed 7 Nov 10:00 - 11 miles/17.7 km - Moderate **Guiting Power**
Park at Guiting Power Village Hall CP (near church) - voluntary donation. (GL54 STX, SP094246)

Walk from Guiting Power to Naunton, along the Wlndrush Way to Bourton-on-the-Water, returning via The Slaughters and the Wardens Way. Picnic.

Contact: Rosie and John, 01684 273746 or 07933 783799 on day

Wed 14 Nov 10:00 - 10miles/16.1 km - Moderate **Malverns**
Meet British Camp CP (£3.00) (E190) (WR13 6DW, SO763403)

A hilly approx. 10m walk in the Malvern hills with lovely views on a clear day. Picnic lunch.

Contact: Catherine, 01452 559924 or 07456 425880 on day

Wed 21 Nov 10:00 10.8m/18km Mod **Ross Round Mini Circuit**
Starts at 10:00: Park off A40 on side road outside Weston Inn (NOT in pub CP) OL14. (HR9 7FR, SO632234)

AM - Hilly over Howle Hill and descend down to The Homme. Pub lunch/cafes/or picnic in Ross On Wye.PM- Not so hilly and shorter via Penyard Park.

Contact: Guy, 01242 251412 or 07968 797186 on day.

Wed 28 Nov 10:00 - 10m Mod **A Wander in the Forest of Dean**

Meet Bradley Hill at Bullock's Beech (on minor road between Blackpool Bridge and Soudley). OL14. (GL14 2UQ, SO658098)
A varied walk on Forest Trails, footpaths, fields and quiet lanes. The route is through woods down to Old Furness Bottom picking up a lane up to Viney Woodside before crossing fields to Viney Hill. Back into the woods towards Yorkley and onto Mallards Pike. The Blakeney Greenway takes us along the valley to Wenford before a steady climb back up to Bradley Hill.
Contact: Jackie, 01594 564417 or 07767 351190 on day Picnic

Wed 5 Dec 10:00 - 10 miles/16.1 km – Mod **Bisley**
Start Windyridge layby, Bisley. (GL6 7BJ, SO903063)

A walk of hills, valleys and woods going past Ferris Court Farm, The Vatch, Furners Farm, Down Farm and return through Dillay and Calfway Farm. Picnic.

Contact: Susanne, 01453 757212 or 07587 713668 on day.

Wed 12 Dec 10:00 6m Easy **Christmas Lunch and morning walk**

The Old Lodge Inn, Minchinhampton Common, Stroud. E168. Please park outside Golf Club environs. (GL6 9AQ, SO853008)
A fairly flat easy going walk across and around the common followed by Christmas lunch at The Old Lodge Inn. The lunch menu offers very good contrasting choices. 2 courses @ £19.95 3 courses @ £23.95 . Details on the web-site www.food-club.com or contact organizer Guy by phone or e-mail: guyvowles@talktalk.net. Booking deadline November 25th with £10 deposit and menu choice required to Guy.
Contact: Guy, 01242 251412 or 07968 797186 on day.

Wed 19 Dec 10:00 10m/16k Mod **Winter Woods Severn Views**

Start at the end of Rosedale Avenue, Stonehouse, near to the railway station. E179 (GL10 2QH, SO810051)
A walk in the South Cotswold Hills. Picnic lunch.

Contact: David P, 01793 771068 or 07824 603711 on day

Moderate- a good level of fitness. May include some steep paths and open country, and may be at a brisk pace.

Strenuous- above average fitness level. May include hills and rough country, and may be at a brisk pace.

Wed 2 Jan 10am 10m **Prinknash Abbey to Centre of Gloucestershire**
Park at the top of Prinknash Abbey CP. (GL4 8EX, SO880137)

Moderate down up and down some urban. Tea/coffee break at the Centre of Gloucestershire. Picnic lunch near a Roman Villa. From there follow the Cotswold Way around to Coopers Hill & back
Contact: BernieG, 01242 602024 Prinknash Abbey afternoon tea

Wed 9 Jan 10:00 - 10 miles/16.1 km – Mod **Rodborough**
Meet Car Park at the top of Rodborough Common (between the Fort and Bear Inn) E168. (GL5 5BP, SO851035)

From Rodborough Common heading towards Bisley and Eastcombe..
Contact: Andy, 01453 885498 Picnic lunch

Wed 16 Jan 10:00 - 10 miles/16.1 km – Mod **Chedworth**
Meet at Chedworth (Denfurlong) Farm Shop CP on the right furthest from the shop. OL45/LR163. (GL54 4NH, SP066106)

Walk Lower Chedworth, Fossebridge, Stowell Park, Hampnett, Yanworth, Chedworth Woods, Chedworth. Picnic.

Contact: Anne, 01242 863504 or 07718499523 on day

Wed 23 Jan 10:00 - 10 miles/16.1 km – Mod **Toadsmoor Valley**
Park considerably in Eastcombe Village and meet at the Green opposite the Post Office. E168 (GL6 7DN, SO891044)

A walk around the Toadsmoor area with some steep ascents and descents plus a few stiles. Picnic.

Contact: Hilary, 01453 753398 or 07503754620 on day

Wed 30 Jan 10:00 - 10 miles/16.1 km – Mod **Uley and Dursley**

Meet on the green outside The Crown PH, Uley. Park carefully on the street. (GL11 5SW, ST791985) A fairly strenuous walk to Owlpen, Virgin Corner's Wood, Cam Peak, Cam Long Down and Uley Bury. Lunch at pub/cafe in Dursley town centre, or bring a packed lunch.
Contact: Mick, 01453 542082 or 07443 643462 on day

Wed 6 Feb 10:00 - 10 miles/16.1 km – Mod **Nailsworth**

Meet at the Garden Centre, Nailsworth, in the CP near to the entrance off B4041 to Avening. (GL6 0AL, ST854996)
An undulating walk around villages, valleys and hills surrounding Nailsworth. Picnic lunch. Drinks in the cafe at the end of the walk.
Contact: Dave, 01452 721792 or 07593 296983 on day

Wed 13 Feb 10:00 - 12 miles/20.1 km – Mod **Andoversford**

Meet at Royal Oak Pub, Andoversford Gloucester Road. Use pub CP if eating/drink, else Station Road, Andoversford GL54 4NB SP024196
Figure of eight. 7 miles am: Sevenhampton, Soundborough, Shipton. 5 miles pm: Horseland, Foxcote, Upper Dowdeswell .
Contact: Martin, 07790437908 Picnic or pub lunch Royal Oak

Wed 20 Feb 10:00 10 miles/16.1 km Mod **Painswick and Cranham**
Meet in layby on A46 just north of the entrance to Prinknash Abbey. E179 (GL3 4RX, SO886142)

Circular walk taking in Coopers Hill, Cranham, Painswick Beacon and Prinknash Abbey. Picnic.

Contact: Sue L, 01452 741229 or 07808 116725 on day

Wed 27 Feb 10:00 10.5m/16.9 km Mod **Charfield and Newark Park**

Meet Charfield Village Hall CP. On the corner of Wotton Road (B4058) and Little Bristol Lane. L162/E167 (GL12 8TF, ST722922)
Charfield, Kingswood, Wortley, Wortley Hill, Newark Park, Tor Hill and Renishaws. 750 feet of ascent. National Trust members please bring membership cards. Moderate to hard.

Contact: Richard, 07512758229 Picnic at Newark Park

Walking boots and warm, waterproof clothing are essential.
If in doubt about fitness please contact the walk leader beforehand.