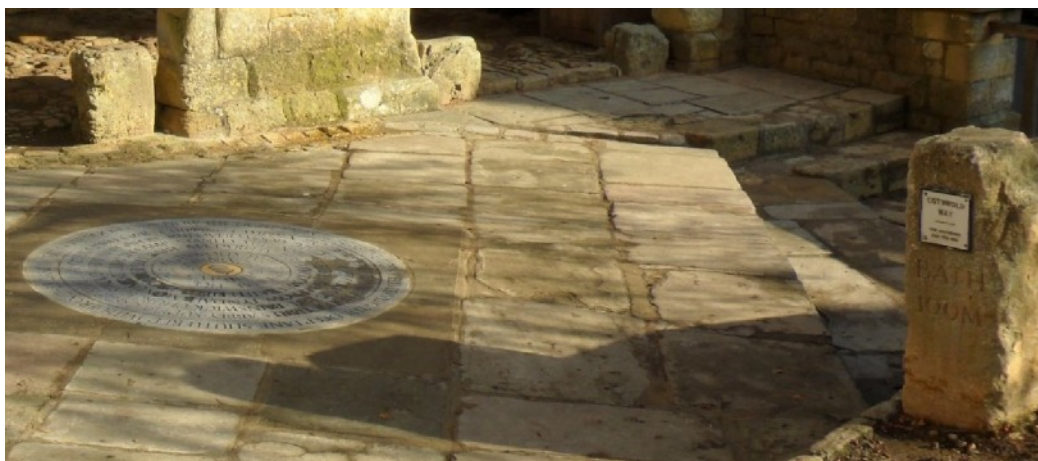


Winchcombe Riverside Path



The 24th November 2014 saw the official opening of the accessible path alongside the river Isbourne. It's to the Sudeley Castle side of the river and gives extensive views of Winchcombe. At various times of year the path used to become too muddy for even hearty walkers. We used part of a legacy (Lilian Wise of Churchdown) to help provide an all-weather surface and install new bridges and gates. Other funders are Entrust, Tewkesbury Borough Council, Winchcombe Town Council, Winchcombe Welcomes Walkers and Cotswold Wardens. Members of Gloucester Group and Cleeve Group attended an enjoyable opening by Lady Aschcombe of Sudeley Castle and the Mayor of Tewkesbury.

Cotswold Way North End Marker Stone



We were also involved in this significant marker stone at Chipping Campden unveiled on 8th November 2014 by the Mayor of Chipping Campden. James Blockley, Cotswold Way Access Officer, managed the project while local artist and ramble Ros Young raised £13,000 from local people and businesses. Together with Central Office we made a large donation from our Way Marker budget for the many walkers of the Cotswold Way. Ramblers from North Cotswold, Mid-Glos (Cheltenham) and Cirencester attended a lively ceremony.

Other News

New Chair



At our December AGM at Woodmancote Village Hall, Ray Chaney was elected Chair for 2015.

80th Anniversary

Yes it's 80 years since ramblers came together. To celebrate, Ramblers is launching the Big Pathwatch, a project open to anyone, to help survey the registered path network. Funded by Ramblers Holidays, it should begin in June and continue through to November.

[The-Big-Pathwatch](#)

Facebook

We're now live on Facebook. If you know what it means click [here](#) [Gloucestershire-ramblers](#) to 'like' our page

Message from the Chair

At the Gloucestershire Area Ramblers Annual General Meeting I was elected as Chair. In my new role I have been heavily reliant on Bernard Gill, the outgoing Chair. I must give thanks to Bernard for his efforts over the last year to improve our profile, his assistance while I take over and his continuation as Publicity Officer.

While out walking I'm sometimes asked where our membership fee goes? Ramblers is first and foremost a charity, with charitable aims to fulfil which are summarised in our mission statement:

- The guardians of the footpath network
- Advocates of the right to roam
- The protectors of the countryside
- The champions of walking

And of course we can have fun while we're doing it.

Our membership fee is essentially split three ways:

- Campaigning
- Legal issues
- Operation of our groups and publicity

Typically, campaigning mainly involves lobbying MPs on behalf of all walkers (not just members of Ramblers) to ensure that footpaths are protected in upcoming legislation. One of our recent successes has been a declaration by our current government to complete the coastal path around England by 2020. (The Wales path, completed in 2012 brings a significant amount to the local economy, wellbeing and health).

Legal costs are primarily associated with defending the public rights of way network. This is our last resort. Ramblers prefers to negotiate with landowners to keep an existing footpath or accept an improved alternative route. Ramblers takes various things into consideration in making these decisions including the historical significance of a path.

In order to reduce costs we're gradually moving away from post to email and making more use of our website. Due to changes in the Ramblers Walkfinder system, our combined walks programme will soon be available only electronically.

We've recently been involved in the dissolution of the Mid Glos Group. We're going to trial a new structure for the Cheltenham District. We'll try to keep a team solely to maintain the footpath network there, separate from walking groups. If you'd like to join this team let me know. We're also trying to establish a walking group based on Cheltenham. Meanwhile we'll help bring in specific walking groups alongside current walking groups there. If you're a group of Ramblers members who have a specific purpose that doesn't conflict with current groups, let us know. A "letter" will shortly be sent to Mid Glos members requesting which group they would now like to join.

The front page shows some projects we'd been working on throughout 2014 which came to fruition as the year came to a close. With these we used a new strategy of using our scarce resources to part-fund larger projects so as to help make them successful - projects that we wouldn't have been able to afford on our own but which benefit walking generally.

Ray Chaney, Area Chair



Des Garrahan and Clare Wadd from ramblers central office discover local signage during the afternoon AGM walk.

South Cotswolds Group

Our walks programme continues to grow with 47 walks in the last 4 monthly period ending in February 2015 and 57 planned for the next 4 months ending in June. We are experimenting with an additional walk which is stipulated to be fast and strenuous and this will take place on the 9th May. A normal paced walk will also be run on this day. If there is sufficient demand this may become a regular feature. We already have in place a monthly provision for a short and a long walk on the same day.

In October we finished our Ice Cream Walk which we completed in 8 monthly stages starting at Winstones ice cream factory on Rodborough Common and finishing at Uphill near Weston Super Mare. At the end 12 of us were presented with certificates produced by Sally showing that we had completed all stages.

Last year our holidays took us to the Lake District with HF Holidays, where some of the group conquered Scafell Pike together with several other daunting peaks, and to Dunster where we had an enjoyable holiday staying at the Yarn Market Hotel and walking on Exmoor. This year our Spring holiday takes us to Lulworth with HF and in the Autumn we are returning to Dunster. Our seasonal lunch in January was again a great success with 52 members enjoying the usual splendid feast at Minchinhampton Golf Club.

The invaluable work of our Footpath Committee continues while Bernard Smith is maintaining our kissing gate installations.

At our AGM we were fortunate enough to get a new volunteer committee member as well as another walks coordinator. At the same meeting Andrew took over from Bernard as Group Secretary.

Richard Davis, Group Chairman



South Cots Members receiving their certificates.



Forest of Dean

A flurry of snow bode well for a walk near Abergavenny with old railway and tramway tracks, industrial archaeology and geology, river and canal, hill and valley, snow and sun.

What more do you need on a walk?

We hope to again attend the Forest activity day at the Speech house in Spring and fingers crossed we'll soon be able to confirm the opening of a new Footpath in Lydney.

A New Way to See Details of All Ramblers' Walks in Gloucestershire

Now that the new Walksfinder has been made available on Ramblers' website, it is now at last possible to see and choose from ALL WALKS of Gloucestershire Ramblers' Groups in date order on smartphones, tablets, laptops, desktops, and not forgetting the local library. Just enter <http://tinyurl.com/GRWalks> or the longer version <http://www.ramblers.org.uk/go-walking/find-a-walk-or-route.aspx?group=GR&tab=walks>. Tap or click the title of a walk of interest to see further details and location maps (try the aerial photos and OS Maps!), or even the nearest Postcode for SatNav enthusiasts. On the bottom right is a box Walks Run By which should say Gloucestershire and All groups. You can change this to say a particular group or even choose a walk from another area when you are on holiday! The old GRWalks or Composite Programme has finally been retired.

You can also see our walks listed in weekday and weekend columns at <http://gloucestershireramblers.org.uk/grwalks/>

If you need any help please email grwalks@gmail.com or tel 01453 873625
Mike Garner

GLOUCESTERSHIRE AREA MID-WEEK WALKS

Sorry, no dogs except registered assistance dogs. Grades: M – moderate; S – strenuous.

<http://gloucestershireramblers.org.uk/midweek/>

Wed 4 Mar 2015 10:00 10m Chavenage Green Andy
01453 885498 Park in Chavenage Green lay-by. ST 866957.
A mostly flat walk to Leighterton and Westonbirt. Picnic. **M**

Wed 11 Mar 10:00 10m Redbrook Catherine
01452 615382 or 07456 425880 on walk morning.
Lower Redbrook CP £1.00 fee. SO 537098. Walk to Newland,
Kymin returning along the river Wye. Picnic. **M**

Wed 18 Mar 10:00 10m Stinchcombe Dave
01452 721792 or 07593 296983 on walk morning.
Stinchcombe Hill. Park in public CP. ST 744983. Walk Elcombe,
The Ridge, Waterley Bottom (picnic/pub drinks) Nibley Knoll. **M**

Wed 25 Mar 10:00 11m Clevedon Mick
01453 542082 or 07443 643462 on walk morning.
Clevedon. Meet at entrance to Salthouse Fields CP (beside the
marine lake). Free on-street parking near-by. ST 395710. Poet's
walk, seafont, Norton's wood, across the Gordano Valley, Coast
Path. Moderate with several climbs. Picnic. **M**

Thu 2 Apr 10:00 10m Cranham & Sheepscombe Geoff & Janet
01531 650349 or 07933 737891 on walk morning.
Roadside parking at Cranham Common near school. SO 894124.
Moderately hilly walk via Overtown, Foston's Ash, Sheepscombe,
Down Hill, Damsell's Mill, Tocknell's Court. Picnic. **M**

Wed 8 Apr 10:00 10m Newent Des
01242 245666 or 07939 615749 on walk morning.
Newent CP. Fee. SO 721261. Botloes Green, Ketford, Compton.
Mostly gently undulating. Picnic. Possibility of spring flowers.
Refreshments in the café next to the car park. **M**

Wed 15 Apr 10:00 10m Lydbrook: two wet bridges and one dry Jackie
01594 564417 Meet Lower Lydbrook CP. SO 597169.
Circular walk taking in Ruardean, Bishops Wood, Kerne Bridge,
Goodrich, Coppet Hill, Welsh Bicknor and back to Lydbrook. Two
moderate ascents otherwise good walking but likely to be muddy
in places. Picnic. **M**

Wed 22 Apr 10:00 11m Kemerton & Bredon Hill Roy
01242 245488 or 07766 413176 on walk morning.
Park by Kemerton Church. SO 946368. Sundial Farm, Bredon
Hill, Elmley Castle, Parsons Folly, Norton Park, Westmancote.
Moderate walk. Picnic. **M**

Wed 29 Apr 10:00 10.8m Adlestrop Arnold
01242 603576 or 07789 317291 on walk morning.
Meet at Adlestrop Village Hall CP. SP 241271. Adlestrop,
Chastleton, Cornwell, Churchill, Kingham, Lower Oddington.
Moderate walk. Bring picnic. **M**

Wed 6 May 10:00 10m Stanton, Stanway & Snowhill Hazel
01242 254105 or 07884 094365 on walk morning.
Park at Village Hall near Stanton Court in Stanton. SP 067343.
Walk Stanton, Stanway, Lidcombe Wood, Snowhill, Great
Brockhampton, Buckland Wood, Laverton. Picnic. **M**

Wed 13 May 10:00 10m Tintern (Monmouthshire side of the valley) Susanne
01453 757212 or 07768 403530 on walk morning.
Tintern Wireworks CP. Turn right in Tintern (coming from
Monmouth) at the Royal George pub and the CP is on the right
after 300 yards. SO 526001. Start on the Wye Valley Walk, then
up across Gaer Hill, through Fedw Wood, past Tump Brake and
return via Fair Oak and Penterry Farm. Moderate walk with
several climbs. Picnic. **M**

Wed 20 May 10:00 10m Upton-on-Severn Maggie
01684 592727 or 07938 543055 on walk morning.
Park in lay-by opposite new fire station. Upton-on-Severn. SO
849401. A largely flat walk exploring the area. Picnic. **M**

Wed 27 May 10:00 13m Nant Bwch & the Cat's Back Mike
01594 562341 Black Hill CP, Olchon Valley. SO 288329. Cross the
Olchon Valley, then ascend Hatterall Ridge, descend to Capel-y-
Ffin, then follow the delightful Nant Bwch Valley to Twmpa,
returning over Hay Bluff and Black Hill, finally descending the
Cat's Back. Energetic with one sustained ascent (and some
shorter ones!). Picnic lunch. **S**

Wed 3 Jun 10:00 12m Daglingworth Susanne
01453 757212 or 07768 403530 on walk morning.
Park at Daglingworth Village Hall CP. SO 993052. Walk through
Cirencester Park via Haines Ash Bottom and Overley Ride to
Pinbury Park, then on to Edgeworth and return via the
Duntisbournes. Picnic. **M**

Wed 10 Jun 10:00 10m Blockley Sue H
01789 763942 or 07786 590780 on walk morning
Blockley. Park considerably in village. Meet at village shop. SP
164348. Up hill to ridge. Mix of woods, tracks and fields via
Bourton, Waverton Stud, Hinchwick and return. Picnic lunch. **M**

Wed 17 Jun 10:00 13.5m Upper Brailes & Epwell Roy
01242 245488 or 07766 413176 on walk morning.
Park Village Hall CP at Upper Brailes. SP 307395. Windmill Hill,
Upper Tysoe, Epwell, Gallow Hill, Fishers Barn, Mine Hill House,
Lower Brailes. Moderate walk. Picnic. **M**

Wed 24 Jun 10:00 11m Charfield to Nibley Monument Richard P
01454 260397 or 07984 853775 on walk morning.
Charfield Village Hall CP. On the corner of Wotton Road (B4058)
and Little Bristol Lane. ST 722922. Huntingford, Michaelwood
Lodge, North Nibley, Nibley Monument, Wotton & Kingswood.
Return across fields to Charfield. Bring picnic. **M**



Supported by Ramblers Worldwide Holidays

**Direct financial support for
your local walking group**



Travel with Ramblers Worldwide Holidays and
support your walking group!
Receive group funding every time you holiday
through the Walking Partnership initiative.

Call us or go online for more information
01707 386804
www.thewalkingpartnership.org.uk

ABTA V5074 Aiol protected 0990 A/I/O

